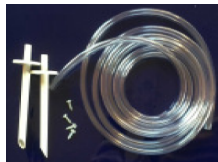


- »» Air differential pressure switch with adjustment pressure range 50 to 500 Pa
- »» Suitable for monitoring filters and fan statuses
- »» Duct fixing kit includes: 2 m plastic tubing, 2 x pitot tubes, 4 x fixing screws
- »» Max. operating pressure 50 mbar (5000Pa)

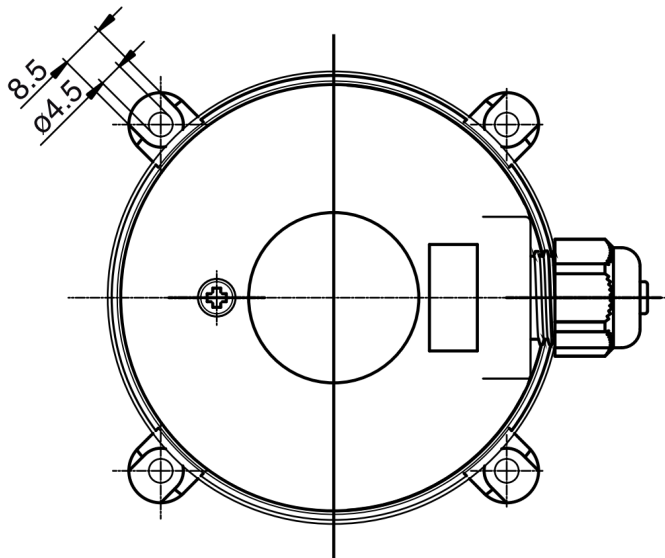
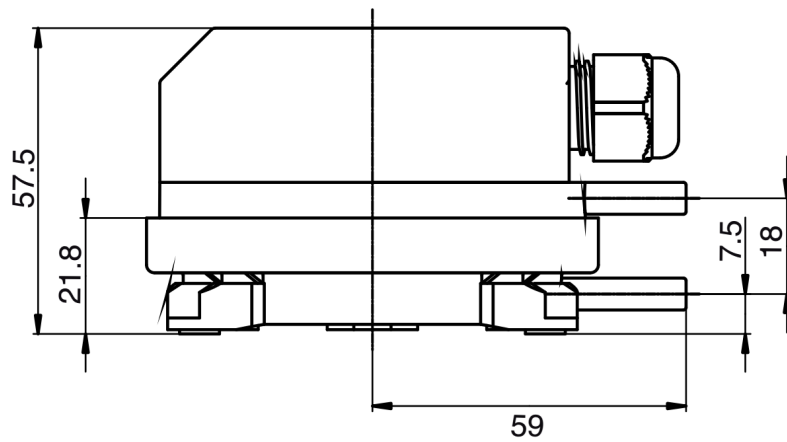
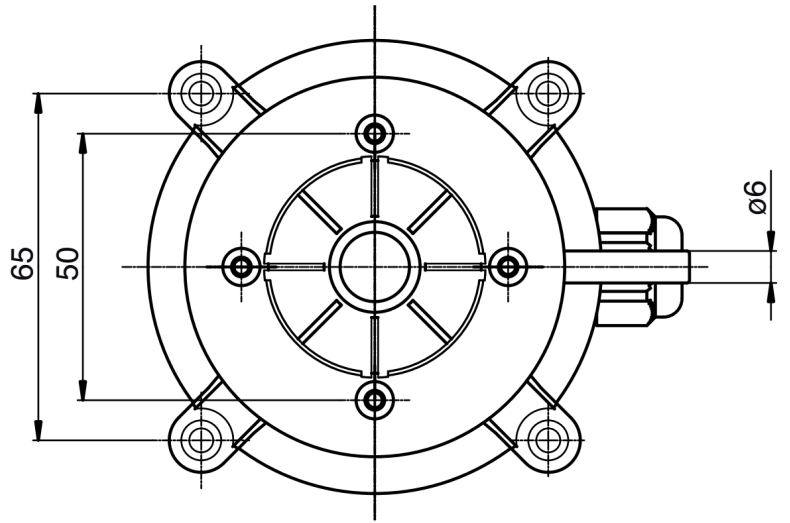


## Air pressure difference switch

The FX-PDSW-A differential pressure switch is suitable for low differential pressure switching applications in air-conditioning systems for providing indication of fan status or 'filter dirty'. With this pressure switch the switching pressure can be adjusted manual by hand or with a screwdriver using a scaled adjustment knob located under the cover. Tolerance for upper and lower switching pressure is +/-15%. Switching pressure specifications apply to vertical installation which is also the recommended position with pressure-pipe connections pointing downwards. If the switches are installed horizontally with AMP connection terminals uppermost, the switching values are approx. 20 Pa higher.

### Technical features

Output:	On/Off
Max. operating pressure:	10 kPa
Medium:	Air, non-combustible and non-aggressive gases
Temperature range:	Medium and ambient temp. from -20°C to +85°C
Storage temperature:	from -40°C to +85°C
Diaphragm material:	Silicone, tempered at +200°C, free of gas emissions
Pressure connections:	2 plastic pipe connection pieces external diameter 6.0 mm:
Housing materials:	Switch body made of PA 6.6. Cover made of PS.
Weight:	150 g
Mechanical working life:	Over 10.000.000 switching operations
Electrical rating:	max. 1.0 A (0.4 A) / 250 Vac
Electrical connections:	AMP flat plug 6.3mm x 0.8mm in accordance with DIN 46244 or screw terminals. Cable conduit M16 with cable strain
Protection:	IP 54
CE Conformity:	Each depending on technical specification: Directive 2006/95/EC; RoHS Directive 2002/95/EC; Gas Appliance Directive 90/396/EC
Manufacturing Process:	ISO9001



## Part number

**FX-PDSW-A-500**

Range 50 -500 Pa with mounting kit